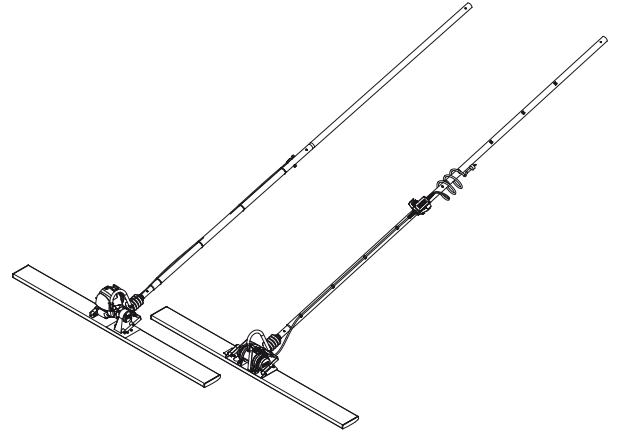


Spare parts list

Beams and screeds

	Valid from serial number
Finishing vibrating beam BV20E	FRO016030
Finishing vibrating beam BV20G	FRO016030



Contents

General information.....	5
Spare parts list.....	6
BV20E.....	6
Switchbox BV20E.....	8
Single phase vibrator.....	10
Tilting device BV20.....	12
BV20G.....	14

General information

This spare parts list applies to the following:

Part number	Description
4812 0511 49	Finishing vibrating beam BV20E
4812 0511 51	Finishing vibrating beam BV20G

Use only authorized parts. Any damage or malfunction caused by the use of unauthorized parts is not covered by Warranty or Product Liability. Any unauthorized use or copying of the contents or any part thereof is prohibited. This applies in particular to trademarks, model denominations, part numbers, and drawings.

Instructions for use

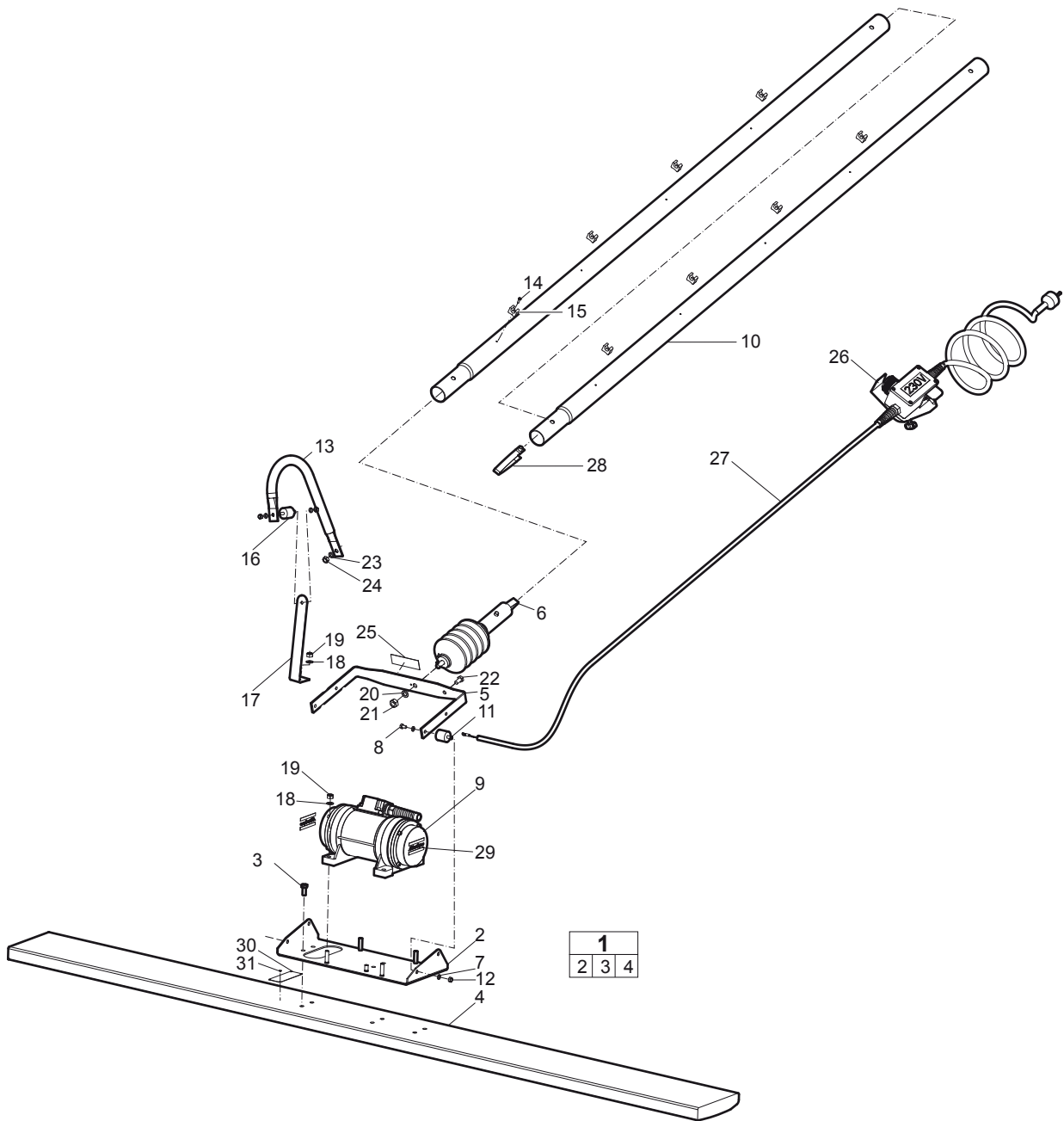
This spare parts list contains no safety regulations and is merely intended to assist in the ordering of spare parts.

For information about operating, servicing, or repairing, the relevant Safety and operating instructions must be consulted at all costs.

Please observe the safety instructions listed in the relevant Safety and operating instructions!

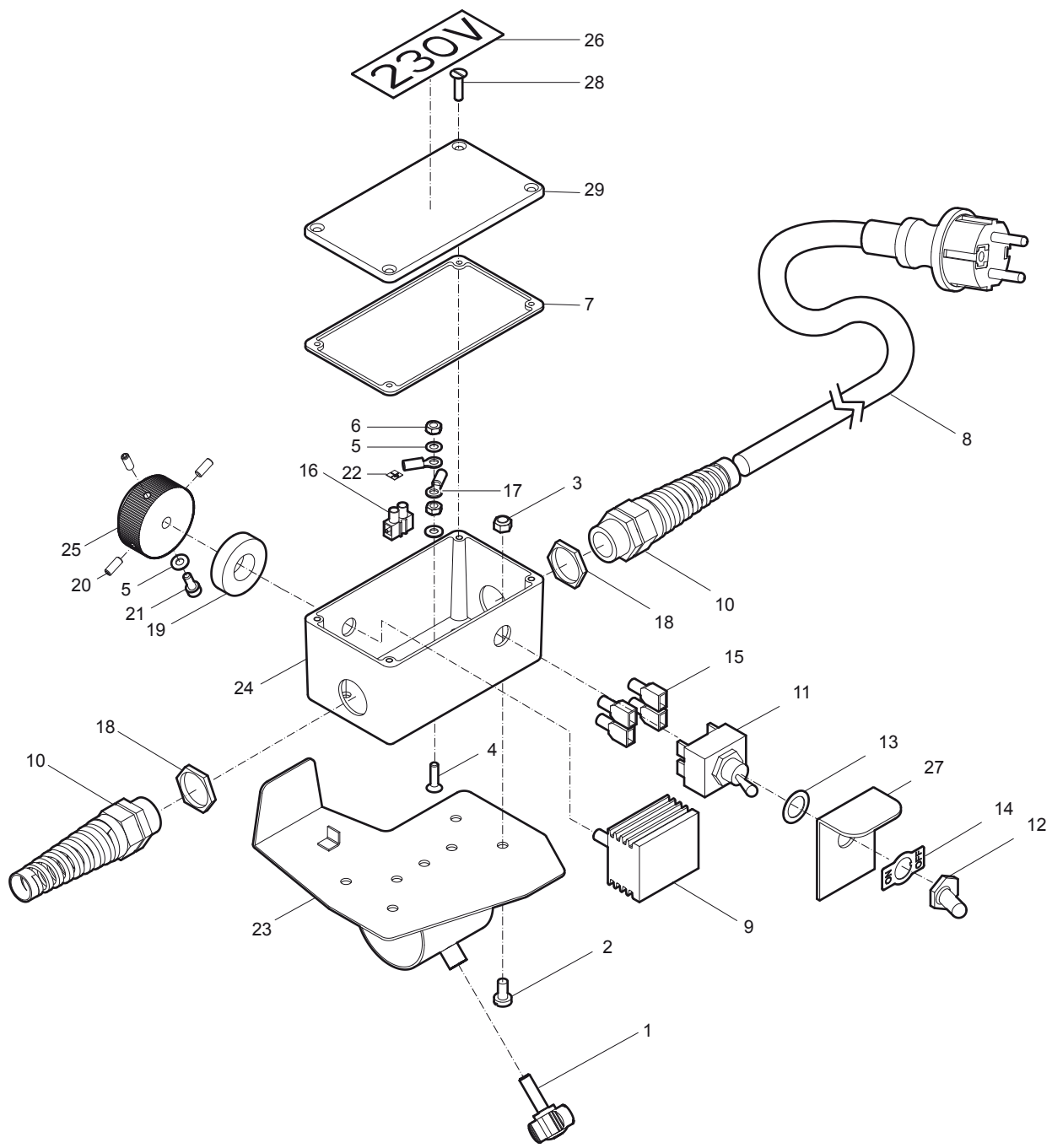
Spare parts list

BV20E



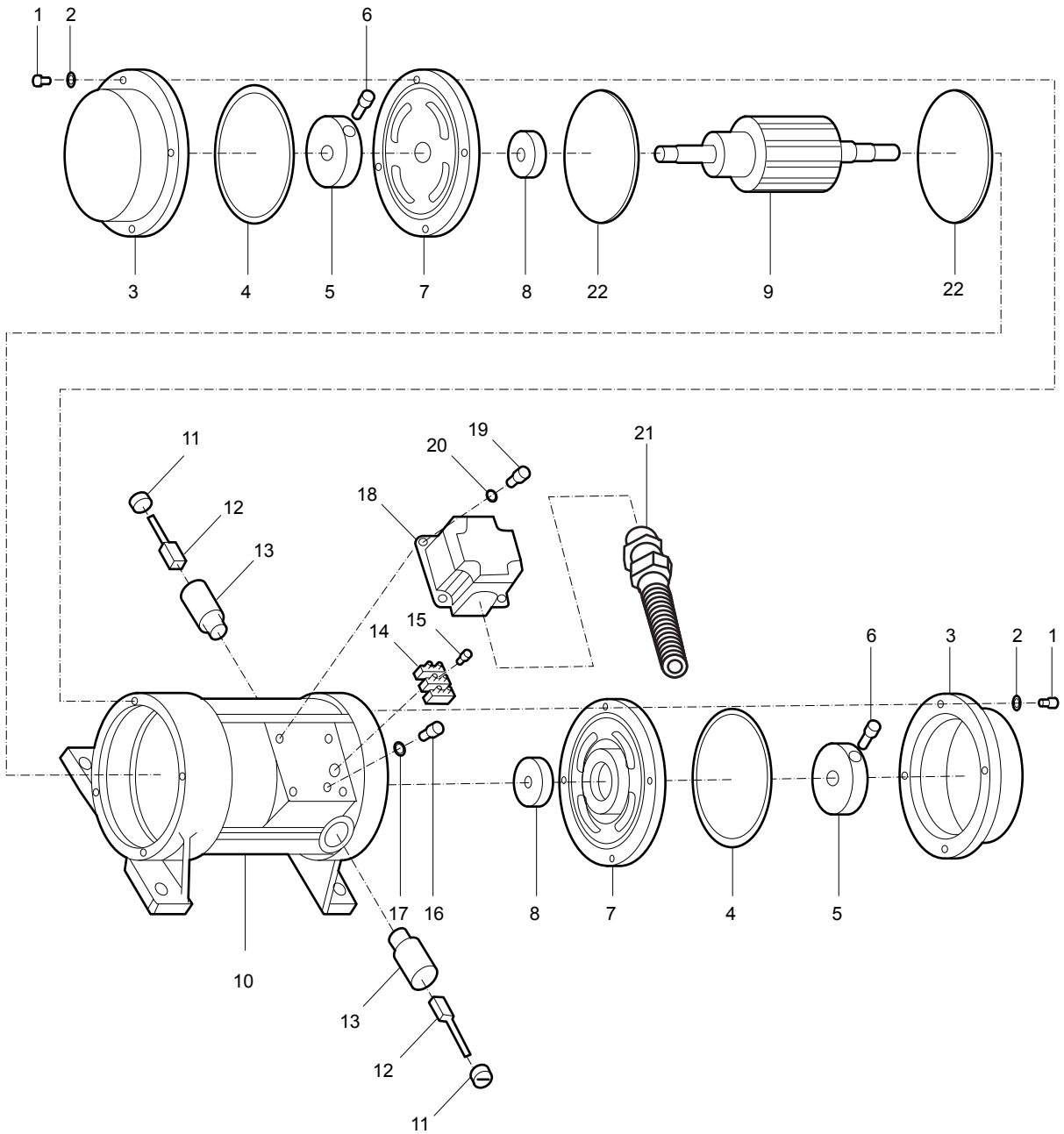
No.	Description	Remark	Quantity	Part number
1(2-4)	Beam complete		1	4812 0511 52
2	Motor holder		1	-
3	Screw	H M8 x 20 mm DIN933	1	-
4	Profile		1	-
5	Fork		1	4700 0331 08
6	Tilting device		1	4700 0220 21
7	Locking washer		10	4700 1860 39
8	Screw	H M6 x 10 mm DIN933	4	-
9	Vibrator		1	4812 0507 33
10	Handle tube		2	4812 0512 63
11	Shock absorber		4	4700 0021 27
12	Nut	M6 DIN934	6	-
13	Handle		1	4812 0507 38
14	Screw	4.85 x19 mm DIN7971	8	-
15	Cable guide		8	4700 0481 79
16	Shock absorber		1	4700 0022 57
17	Square plate		1	4812 0512 58
18	Washer	MU8	5	-
19	Lock nut	M8 DIN985	5	-
20	Locking washer	Nord-Lock M10	1	4700 1860 38
21	Nut	M10 DIN934	1	-
22	Screw	H M8 x 16 mm DIN933	1	-
23	Locking washer	Nord-Lock M8	1	-
24	Nut	M8 DIN934	1	-
25	Data plate		1	-
26	Switchbox		1	4700 0327 68
27	Cable	2 m 6.6 ft.	1	4700 1858 05
28	Fastening spring		1	4700 0023 02
29	Lable	Atlas Copco	2	-
30	Lable		1	-
31	Screw		4	-

Switchbox BV20E



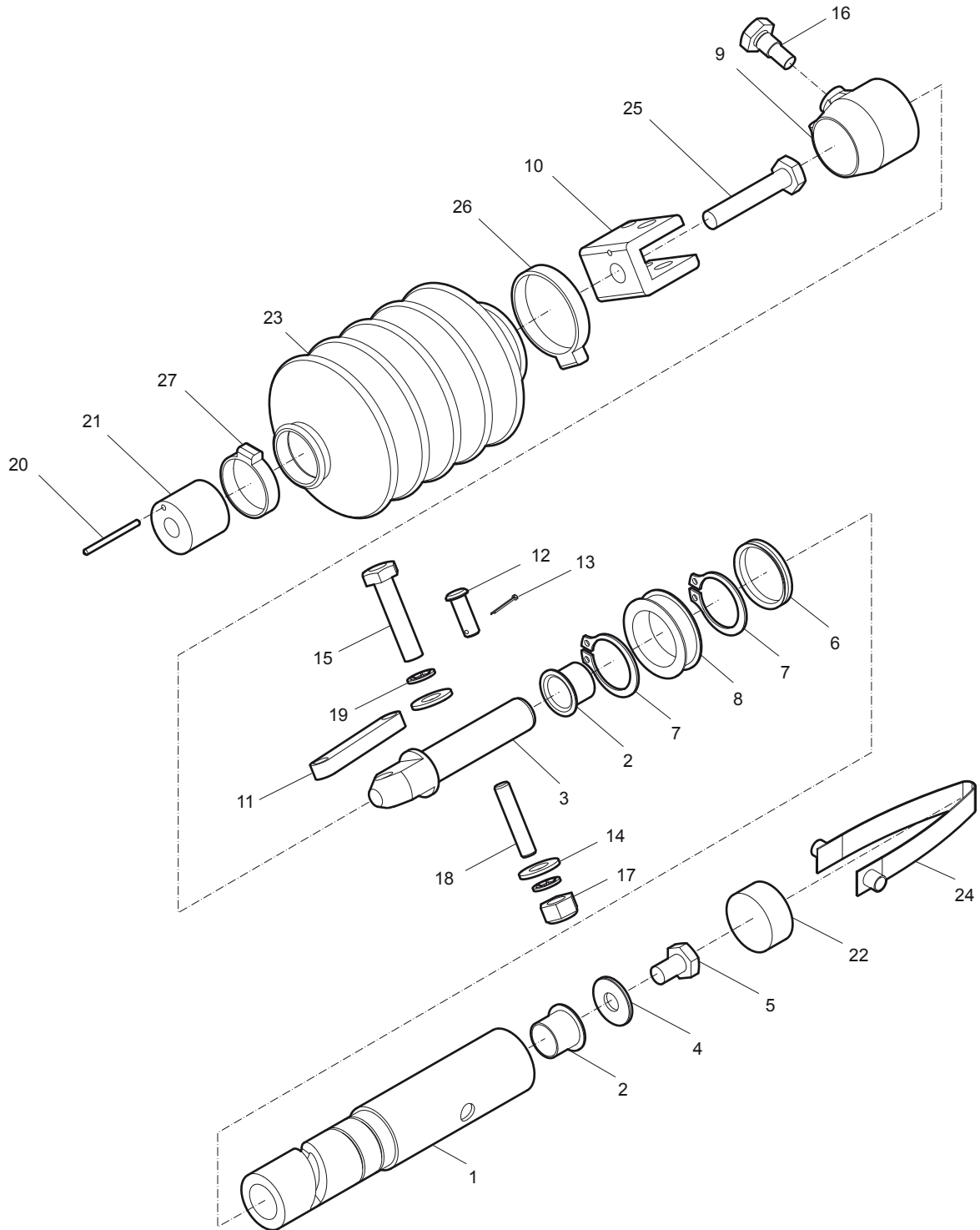
No.	Description	Remark	Quantity	Part number
1	Screw		1	4700 0024 43
2	Screw	CS M5 x 10 mm DIN84A	4	-
3	Lock nut	M5 DIN985	4	-
4	Slotted screw	M4 x 14 mm DIN963A	1	-
5	Washer	MU4	3	-
6	Nut	M4 DIN934	2	-
7	Rubber seal		1	4700 0035 49
8	Cable with plug		1	4700 0032 90
9	Regulator		1	4700 0033 95
10	Stuffing box		2	D604 0033 98
11	Switch		1	4700 3647 63
12	Membrane		1	4700 3647 65
13	Sealing washer		1	4700 3647 66
14	On/Off plate		1	4700 3655 38
15	Terminal		4	4700 1856 45
16	Junction box		1	4700 9269 75
17	Spade		3	4700 9600 65
18	Plastic nut		2	D604 0011 61
19	Foam washer		1	4700 0021 49
20	Set screw	HC M4 x 10 mm ISO4028	3	-
21	Hexagon socket screw		1	0211 1170 03
22	Label	Grounded	1	4700 0034 57
23	Switchbox holder		1	4700 0327 65
24	Aluminum box		1	4700 0327 67
25	Button		1	4700 0476 67
26	Label	230V	1	4700 0439 85
27	Cover		1	4700 0483 41
28	Screw		4	-
29	Switchbox cover		1	-

Single phase vibrator



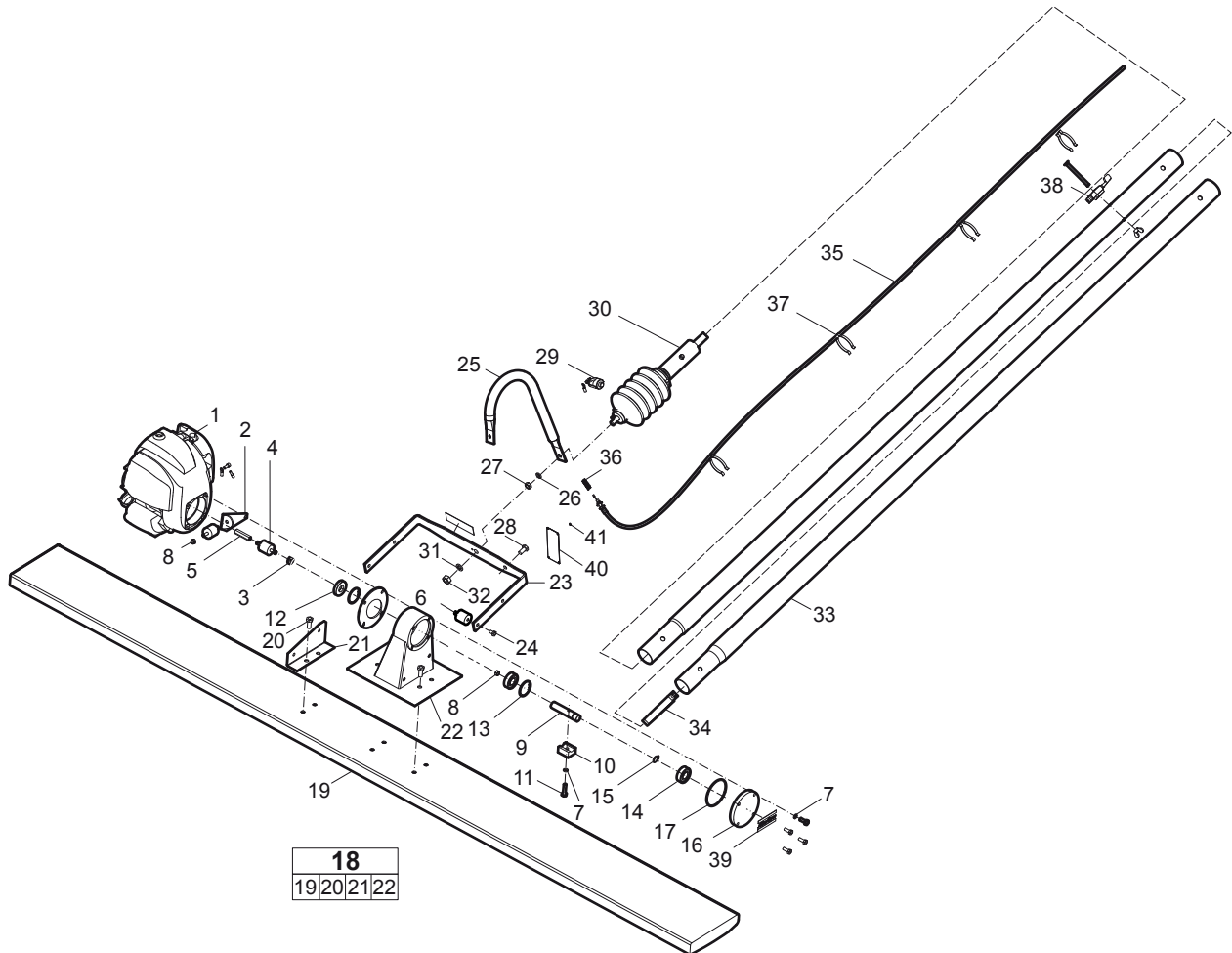
No.	Description	Remark	Quantity	Part number
1	Screw		8	-
2	Washer		8	4700 6000 03
3	Cover		2	-
4	O-ring		2	D230 2222 03
5	Eccentric		2	4700 0480 44
6	Screw	C HC M5 x 10 mm DIN912	2	-
7	Flange		2	-
8	Ball bearing		2	D230 2222 08
9	Rotor		1	D230 2222 09
10	Stator complete		1	-
11	Brush cover		2	D230 2222 12
12	Brushes	Set	1	D230 2222 13
13	Brush retainer		2	D230 2222 14
14	Terminal board		1	D230 2222 15
15	Self tapping screw		1	-
16	Screw	C HC M4 x 8 mm DIN912	1	-
17	Washer	Ø4 mm	1	4700 6150 05
18	Cover		1	-
19	Screw	C HC M5 x 16 mm DIN912	1	-
20	Washer		1	4700 1823 36
21	Gland nut		1	4700 1848 27
22	O-ring		2	D230 2222 23

Tilting device BV20



No.	Description	Remark	Quantity	Part number
1	Tube		1	4700 0480 35
2	Bearing		2	4700 0001 24
3	Shaft		1	4700 0476 82
4	Washer	LU10	1	-
5	Screw	H M10 x 16 mm DIN933	1	-
6	V-ring	V-30A	1	4700 0003 82
7	Clamp ring	SW32	2	4700 0004 50
8	Ring		1	4700 0476 83
9	Slid		1	4700 0476 89
10	Fork		1	4700 0476 84
11	Connection		1	4700 0476 86
12	Clevis pin	Ø8 x 22 mm Ø0.31 x 0.86 in.	1	0113 4152 00
13	Split pin		1	0111 1187 00
14	Washer	MU10	2	-
15	Screw	H M10 x 45 mm DIN931	1	-
16	Screw		1	4700 0476 87
17	Lock nut	M10 DIN985	1	-
18	Cylindric pin	Ø8 x 40 mm H8 Ø0.31 x 1.57 mm	1	-
19	Lock washer	Quicklock Ø8 mm Ø0.31 in.	2	-
20	Spring pin	Ø3 x 40 mm Ø0.11 x 1.57 in.	1	-
21	Spacer		1	4700 0476 85
22	Plug		1	4700 0003 85
23	Gusset		1	4700 0021 29
24	Fastening spring		1	4700 0023 02
25	Screw	H M10 x 55 mm CL8.8 DIN931	1	-
26	Clamp	Ø40-50 mm Ø1.57 x 1.96 in.	1	0347 6112 00
27	Clamp	Ø26-38 mm 1.02 x 1.49 in.	1	0347 6109 00

BV20G



No.	Description	Remark	Quantity	Part number
1	Engine	Honda GX25	1	4700 3689 55
2	Mounting plate		1	4700 0490 97
3	Washer	Ø6 mm DIN7349 Ø0.23 in.	1	-
4	Shock absorber		6	4700 0022 57
5	Splice nut		1	4700 0490 96
6	Shock absorber		4	4700 0021 27
7	Lock washer	Nord-Lock M6	17	-
8	Nut	M6 DIN934	8	-
9	Vibrator shaft		1	4700 0475 29
10	Eccentric		1	4700 0476 27
11	Screw	H M6 x 25 mm DIN933	1	-
12	Radial seal	A 15 x 35 x 7 mm 0.59 x 1.37 x 0.27 in.	1	4700 0003 22
13	Retaining ring	Ø15 x 1.5 mm DIN472 0.59 x 0.06 in.	2	-
14	Bearing		2	4700 9292 96
15	Retaining ring	Ø15 x 1.5 mm DIN471 0.59 x 0.06 in.	1	-
16	Flange		1	4812 0512 61
17	O-ring		1	4700 W651 20
18(19-22)	Beam complete		1	4700 0331 06
19	Profile		1	-
20	Screw	H M8 x 20 mm DIN933	6	-
21	Square plate		1	-
22	Vibrator holder		1	-
23	Fork		1	4700 0331 08
24	Screw	M6 x 10 mm DIN933	4	-
25	Handle		1	4812 0507 38
26	Lock washer	Nord-Lock M8	1	-
27	Nut	M8 DIN934	1	-
28	Screw		1	-
29	Kill switch		1	4700 0026 33
30	Tilting device		1	4700 0220 21
31	Lock washer	Nord-Lock M10	1	-
32	Nut	M10 DIN934	1	-
33	Handle tube		2	4812 0512 63
34	Fastening tube		1	4700 0023 02
35	Cable		1	4700 0490 98
36	Pressure spring		1	4700 0027 41
37	Tool holder		4	4700 0028 30
38	Throttle		1	4700 0476 71
39	Label	Atlas Copco	1	4812 0510 93
40	Data plate		1	-
40	Label		1	4812 0512 64
41	Screw		4	-



Any unauthorized use or copying of the contents or any part thereof is prohibited.
This applies in particular to trademarks, model denominations, part numbers, and drawings.

© 2012 Atlas Copco Construction Tools AB | No. 9800 1190 01 | 2012-12-19

www.atlascopco.com